

**COVID-19 Vaccination Centre –  
Rural Middlesex Town Hall for  
Primary Care**

February 23<sup>rd</sup>, 2021



# Welcome

Steph Ouellet (MHA) / Dr. Phil Vandewalle (MHA)

# Agenda



- Welcome
- About the London-Middlesex Primary Care Alliance
- Update from Middlesex-London Health Unit
  - Overall COVID-19 vaccination efforts
  - Mount Brydges vaccination clinic details
  - How can primary care assist?
- Q & A
- Closing Remarks

# London Middlesex Primary Care Alliance

## Primary Care Outreach COVID-19 Vaccination Town Hall

February 23<sup>rd</sup>, 2021

Dr. Phil Vandewalle



# LMPCA – Vision and Mission

**Vision:** An inclusive network of primary care providers leading with a unified voice to improve the health of our community.

**Mission:** Create a strong and united primary care network to:

- **Lead** system change utilizing quintuple aim values
- **Drive** health equity and continuous quality improvement for the best possible experience and health outcomes
- **Advance** patient-centred equitable care in partnership with those we serve
- **Improve** integration of primary health services with public health and other social and health care partners

# Possible Primary Care Structure in London Middlesex



# Possible Primary Care Representation in London Middlesex

Based on current primary care provider and physician profile (2020):

- FFS/CCM/FHG (2)
- FHN/FHO without FHT (3)
- FHN/FHO with FHT (2)
- CHC/AHAC (1)
- Other (Walk-ins, Focused Practice, ED, Palliative Care etc.) (3)
- Academic (1)
- Allied Health (1)
- NP (1)
- Primary Care Organization (leadership/Executive Director) (1)
- Ex-Officio (1-2)
- Patient / Family / Caregiver (1-2)

*Consideration for Rural (2) / Urban (13)*

# Call to Action

- ✓ Sign up to the LMPCA Newsletters
- ✓ Spread the word to your Primary Care colleagues
- ✓ Join the LMPCA meetings
- ✓ Express interest for an Executive Council position

Sign up to LMPCA newsletter HERE:

<https://lp.constantcontactpages.com/su/Kn556bD/Subscribe>



# Next Steps

- Interim LMPCA leadership outreach meetings / presentations (February-March)
- Expression of interest for Executive Council Leadership Roles (mid-March)
- Voting LMPCA leadership (March 22-26)
- Transition of leadership (March 29-April 13)



# MLHU Update

Dr. Alex Summers (MLHU)

Stephen Turner (MLHU)

Emily Williams (MLHU)

# COVID-19 Update

Dr. Alex Summers

# Vaccine Plan Overview

Stephen Turner

Director, Environmental Health &  
Infectious Diseases (MLHU)

# Objectives

- Achieve a coverage rate of 75% of eligible recipient of the vaccine in as short a time as possible
- Ensure prioritized and transparent distribution of vaccine to minimize severe outcomes and death associated with COVID-19, in keeping with provincial parameters
- Provide clear and consistent education and information regarding the vaccine and its distribution
- Maintain public confidence

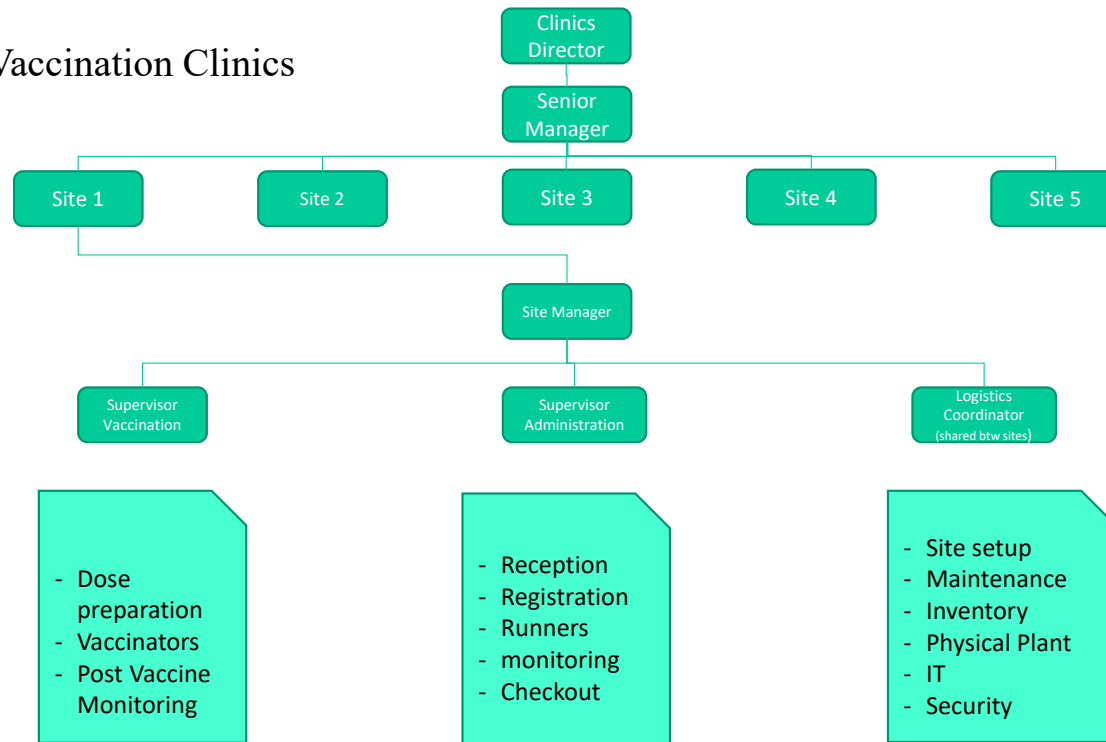
## Principles

- Minimize harms and maximize benefits
- Equity
- Fairness
- Transparency
- Legitimacy
- Public trust

# Deployment Modes

- Fixed-Site Mass Vaccination Centres
  - Chosen for population accessibility, security, ability to scale up
- Mobile Deployment Teams
  - Immobile / less mobile populations (LTCH / RH, Home Care, prisons, etc.)
  - Priority populations (First Nations, migrant farms, smaller target communities, etc.)
  - Rapid deployment (priority change, outbreaks, etc.)
- Pharmacists / Primary Care
  - Broad population access
  - Once viable vaccine is available in sufficient quantities

Mass Vaccination Clinics





# Staffing Process Overview

Emily Williams

Director, Healthy Organization  
(MLHU)

## First Steps

- Send email to [Sheena.Blasing@SJHC.London.on.ca](mailto:Sheena.Blasing@SJHC.London.on.ca) indicating your interest
- MLHU will send you an email:
  - An agreement/contract
  - A link to an OPP cybersecurity video
  - A workplace safety presentation

## Second Steps

- Completed agreement is received at MLHU
- MLHU will email you a LINK to an excel spreadsheet
- Log in and indicate:
  - Your availability
  - The maximum shifts you want
  - Your preferred site to work

## Third Steps

- MLHU will post the schedule each week
- MLHU will email you to indicate the schedule is posted
- You log in to see what shifts you have been booked

## Additional Details

- Morning shifts are currently 8:30 am – 2:30 pm
- Afternoon shifts are currently 2:00 pm – 8:00 pm

## Additional Details

- Currently schedule is released each WEDNESDAY for the following SUNDAY – SATURDAY time period
- Feedback requested:
  - How much lead time do you require?

Questions?



# Closing Remarks

Dr. Phil Vandewalle (MHA)





**Thank you!**