

Rural Middlesex Primary Care COVID Vaccination Town Hall

February 23, 2021 7-8 PM

Link to recording of Town Hall: <https://lprimarycare.ca/covid-19-vaccination-faq/>

Interested in working at a mass vaccination clinic? See page 2.

London Middlesex Primary Care Alliance

Vision: An inclusive network of primary care providers leading with a unified voice to improve the health of our community.

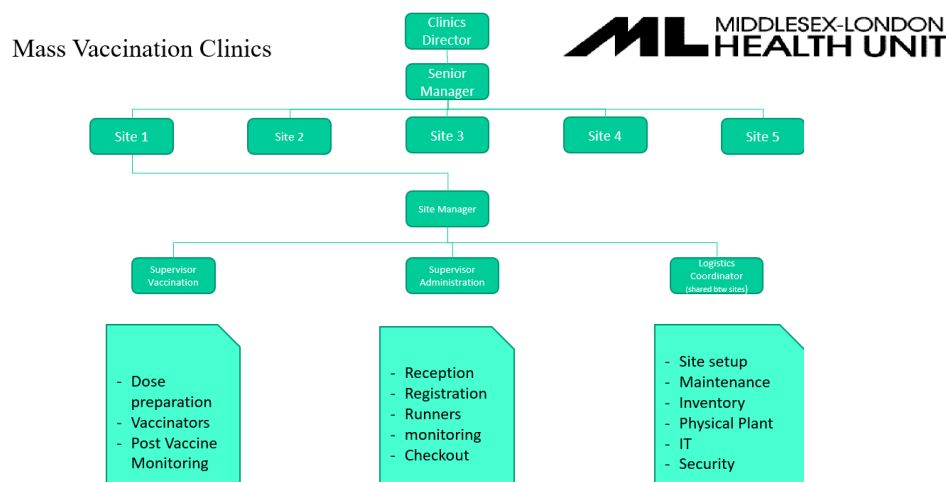
Mission: Create a strong and united primary care network to:

- **Lead** system change utilizing quintuple aim values
- **Drive** health equity and continuous quality improvement for the best possible experience and health outcomes
- **Advance** patient-centred equitable care in partnership with those we serve
- **Improve** integration of primary health services with public health and other social and health care partners

Middlesex-London Health Unit COVID Vaccination Updates

Vaccine Planning:

- Achieve a coverage rate of 75% of eligible recipient of the vaccine in as short a time as possible
- Ensure prioritized and transparent distribution of vaccine to minimize severe outcomes and death associated with COVID-19, in keeping with provincial parameters
- Provide clear and consistent education and information regarding the vaccine and its distribution
- Maintain public confidence



Staffing Process:

If interested in working at a mass vaccination clinic, please follow these steps:

STEP 1 – Send an email to sheena.blasing@sjhc.London.on.ca indicating interest. MLHU will send you an email with an agreement/contract, a link to an OPP cybersecurity video, a workplace safety presentation.

STEP 2 – Completed agreement received by MLHU, MLHU will send a link to a spreadsheet to indicate: your availability, maximum shifts desired, preferred sites to work at.

STEP 3 – MLHU will post the schedule each week. MLHU will email you to let you know the schedule is posted and you can log in to see what shifts you have booked.

Contact Information:

Rural Middlesex Primary Care Questions: Dr. Phil Vandewalle vandewal@uwo.ca

London Middlesex Primary Care Alliance Questions: Janet Dang janet.dang@thamesvalleyfht.ca

Middlesex London Health Unit Questions: healthcareproviders@mlhu.on.ca

Middlesex London Health Unit HR / Scheduling Questions: Deneen.Langis@mlhu.on.ca